

**CABLE PROBES**



**PPQ-612-00-X-X**

Cable probe  $\varnothing$ 18, L=90 mm, w/o cable, housing SS 316L, filter FPQ-P350



**PPQ-612-XX-X-X**

Cable probe  $\varnothing$ 18, L=90 mm, housing SS 316L, filter FPQ-P350



**PPQ-621-XX-X-X**

Cable probe  $\varnothing$ 12, L=200 mm, housing SS 316L, filter from SS mesh 25  $\mu$ m



**PPQ-622-XX-X-X**

Cable probe  $\varnothing$ 12, L=300 mm, housing SS 316L, filter from SS mesh 25  $\mu$ m



**PPQ-622-00-2-4**

Air flow probe  $\varnothing$ 12, M12 connector, L=300 mm, housing SS 316L

**Ordering:**

**PPQ-612-00-X-X**

**measurement of:**

- 2 : temperature
- 3 : temperature & humidity

**connector type:**

- 2 : connector, operating temp.  $-30 \div +80^{\circ}\text{C}$
- 4 : connector, operating temp.  $-30 \div +120^{\circ}\text{C}$

**Ordering:**

**PPQ-612-XX-X-X**

**PPQ-621-XX-X-X**

**PPQ-622-XX-X-X**

**measurement of:**

- 2 : temperature
- 3 : temperature & humidity

**connector & cable type:**

- 1 : gland, PUR covered, operating temp.  $-30 \div +80^{\circ}\text{C}$
- 3 : gland, TPE covered, operating temp.  $-30 \div +120^{\circ}\text{C}$

**cable length:**

- 05 (0,5m), 10 (1m), 15 (1,5m), 20 (2m), 25 (2,5m), 30 (3m)

**FILTERS**



**FPQ-P350**

Teflon filter (PTFE) with increased resistance against splashing water, non-absorbent surface, does not rust, operating temperature  $-30 \div +120^{\circ}\text{C}$

**MOUNTING ACCESSORIES**

**HPQ-FS12**

Flat circular flange for  $\varnothing$ 12 probes, SS 316L



**HPQ-TS12**

Thread bracket for  $\varnothing$ 12 probes, SS 316L, M20x1,5



**HPQ-W1218**

Wall mounting bracket for  $\varnothing$ 12 and  $\varnothing$ 18 probes, SS 316L



**HPQ-CGS18**

Thread bracket for  $\varnothing$ 18 probes, M25x1,5



CONNECTION ACCESSORIES



**CPQ-00**  
M12 connector, 4-pin, w/o cable  
for PPQ-612 probes,  
operating temp. -30 ÷ +80°C



**CPX-30**  
M12 connector, 4-pin, cable 3 m, for PPQ-612 probes

**Ordering:**

**CPX-30**

**operating temp.:**  
Q : standard: -30 ÷ +80°C, cable TPU covered  
T : expanded: -30 ÷ +120°C, cable TPE covered

ADDITIONAL ACCESSORIES



The **SIR-25** infraRed remote control may be used as external programming keyboard for all SIMEX devices equipped with IR receivers and remote programming functions. Pressing of any local IR controller key, causes transmission of it's code to the device. The remote control features a five-button keyboard, including the **F/Σ/RESET** function button dedicated to the operation of the devices in the following group: counters, flow meters, and tachometers. Functions of particular keys depend on devices features.

Power supply voltage: 3V DC - 1 lithium battery CR2032 type  
Operation range: from 0,5 to 5 m (depend on programmed device features)



**SRS-U4**  
Module is designed to connect a USB host to slave devices equipped with RS-485 interface. The PC with special software can be used as a host. The **SRS-U4** unit guarantees full galvanic isolation between USB and RS-485 circuits. The converter can work with any devices equipped with RS-485 interface and contains integrated circuit which supports USB 1.1 and USB 2.0 standards. The main purpose is connection of PC host computer with industrial data acquisition and visualisation systems based on RS-485 interface. The **SRS-U4** can be also manufactured with DIN mounting adaptor.



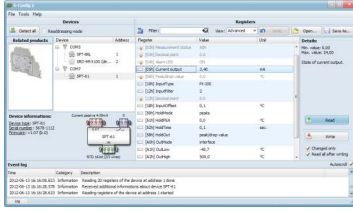
**SCL-QM**  
Case lock - access is safeguarded by means of insert lock



**LSQkit**  
Lid supports (2 pcs)

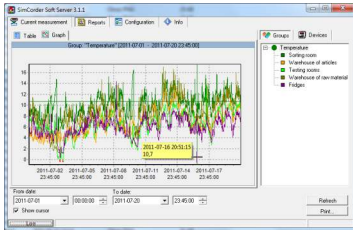


**SOFTWARE**



**S-Config 2** is used for the simultaneous detection of devices in multiple Modbus RTU networks and allows user to change the configuration of most of them. For each detected device a list of its registers, which the user can modify, is displayed and also additional informations about device parameters (type, address in the network, etc.).

**S-Config** software can be downloaded from SIMEX website at [www.simex.pl](http://www.simex.pl)



**SimCorder Soft** is a visualisation application created to facilitate work with advanced networks of the SIMEX devices, for acquisition, visualisation, reporting, archiving, exporting and printing of measurement data from all network devices. You can download measurements from the devices automatically or on demand. There is a possibility of immediate notification about emergency states via SMS or e-mail, which will often allow to quickly resolve an arising problem while avoiding long and expensive stoppages. You can view the measurement data, emergency states and configuration via the internet at every time.

**CALIBRATION CERTIFICATE**

Standard calibration certificate, in 1 point, issued by Simex laboratory, free of charge

|         |   |
|---------|---|
| SCCI-T  | 1 temperature channel (1 point: 25°C)   |
| SCCI-TH | 1 temperature channel (1 point) + 1 relative humidity channel (2 points: 20%/70% RH@25°C) |

